

Series LS Screwed End

The Series LS solid stainless steel ball valve has been designed to stand up consistently against the very toughest of applications. It is intended for services such as CO₂, H₂S, saltwater, and other severely corrosive media.

Made of stainless steel throughout (including balls, stems, and handles) the LS is available in both 2000 psi and 3000 psi working pressures. They are maintenance-free and require no field lubrication for the life of the valve.

The LS features an exclusive patented design to inhibit the loosening of the end adapter. The adapter end of the body is machine-cripped at each wrench flat of the end adapter itself, thus securing the adapter to the body.

General Features

- All metal components of stainless steel.
- Locking device and handle.
- Multi-seal seats standard.
- Low torque operation at full rated pressure.
- Machine-cripped tailpiece
- NACE standard

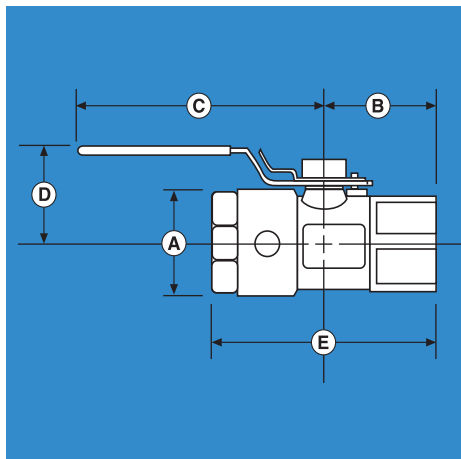
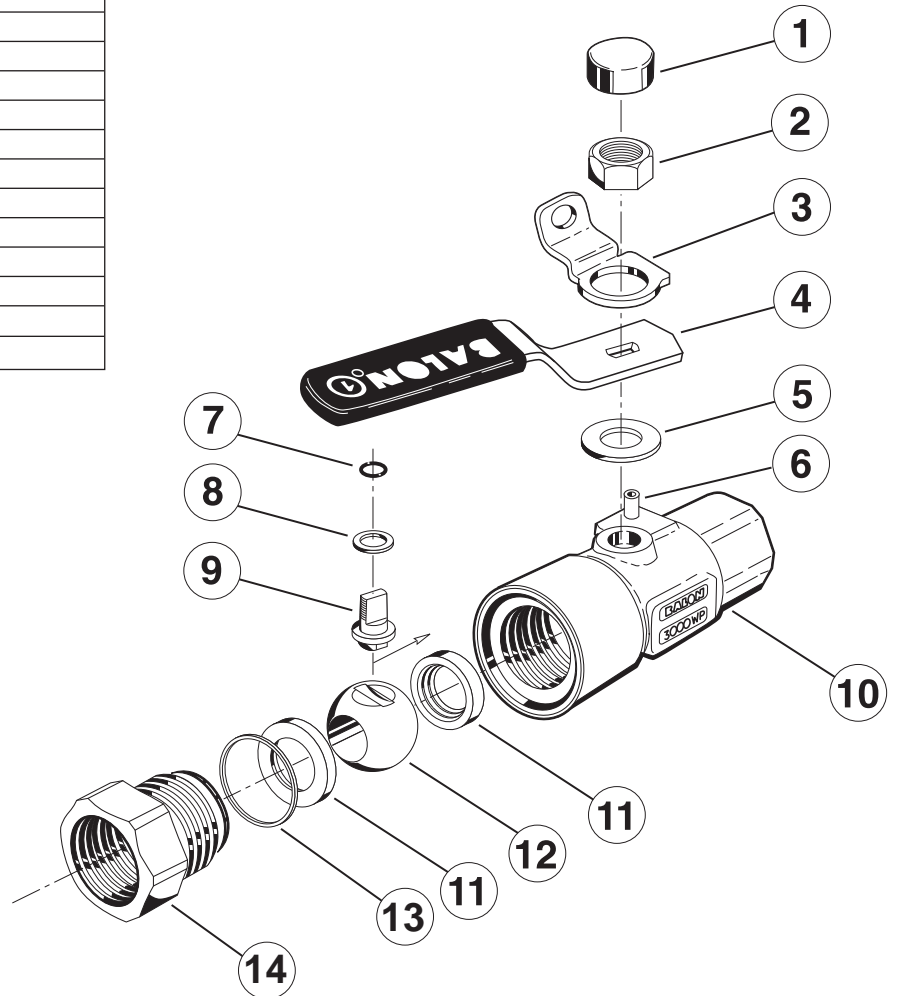


Material Description

ITEM	PART NAME	MATERIAL DESCRIPTION (NACE STANDARD)
1	Weather guard	Polyethylene
2	Stem nut	Stainless steel
3	Lock plate	Stainless steel
4	Handle	Stainless steel
5	Stem washer	Acetal
6	Stop pin	Stainless steel
7	Stem O-ring	Buna
8	Stem seal	TFE </td
9	Stem	AISI: 316 stainless steel
10	Body	AISI: 316 stainless steel
11	Ball seat	Nylon (TFE optional)
12	Ball	AISI: 316 stainless steel
13	Body seal	Fluorocarbon
14	Adapter	AISI: 316 stainless steel

* Handle and locking device standard on all Series LS ball valves.

Lever Operated
Threaded Construction
2000-3000 PSI W.P.



BALON SERIES "LS" SCREWED END BALON BALL VALVE - DIM. DATA								
SIZE	CAT. NO.	PORT	W.P.	A	B	C	D	E
1/4 x 3/8 x 1/4	LS-02592	3/8	3000	1.375	1.125	3 1/2	1 1/8	2 1/8
1/2 x 3/8 x 1/2	LS-05591	3/8	3000	1.375	1.438	3 1/2	1 1/8	3
1/2 x 3/8 x 1/2	LS-05561	3/8	2000	1.375	1.125	3 1/2	1 1/8	2 1/2
3/4 x 3/4 x 3/4	LS-07592	3/4	3000	2.125	1.750	4 1/8	2 1/4	3 1/4
1 x 3/4 x 1	LS-10591	3/4	3000	2.125	2.000	4 1/8	2 1/4	4 1/8
1 x 3/4 x 1	LS-10561	3/4	2000	2.125	1.875	4 1/8	2 1/4	3 3/4

WP is for valve equipped with standard nylon seats. See Chart on page 43 for TFE ratings.