

# Series US Weld X Flange

---

To broaden the user benefits of the Series US, Balon has added the weld-by-flange configuration to the weld-by-weld line of the series. The weld-by-flange valve adds significant versatility to the Series US, and mirrors the same worthwhile and meaningful features of the weld-by-weld line such as:

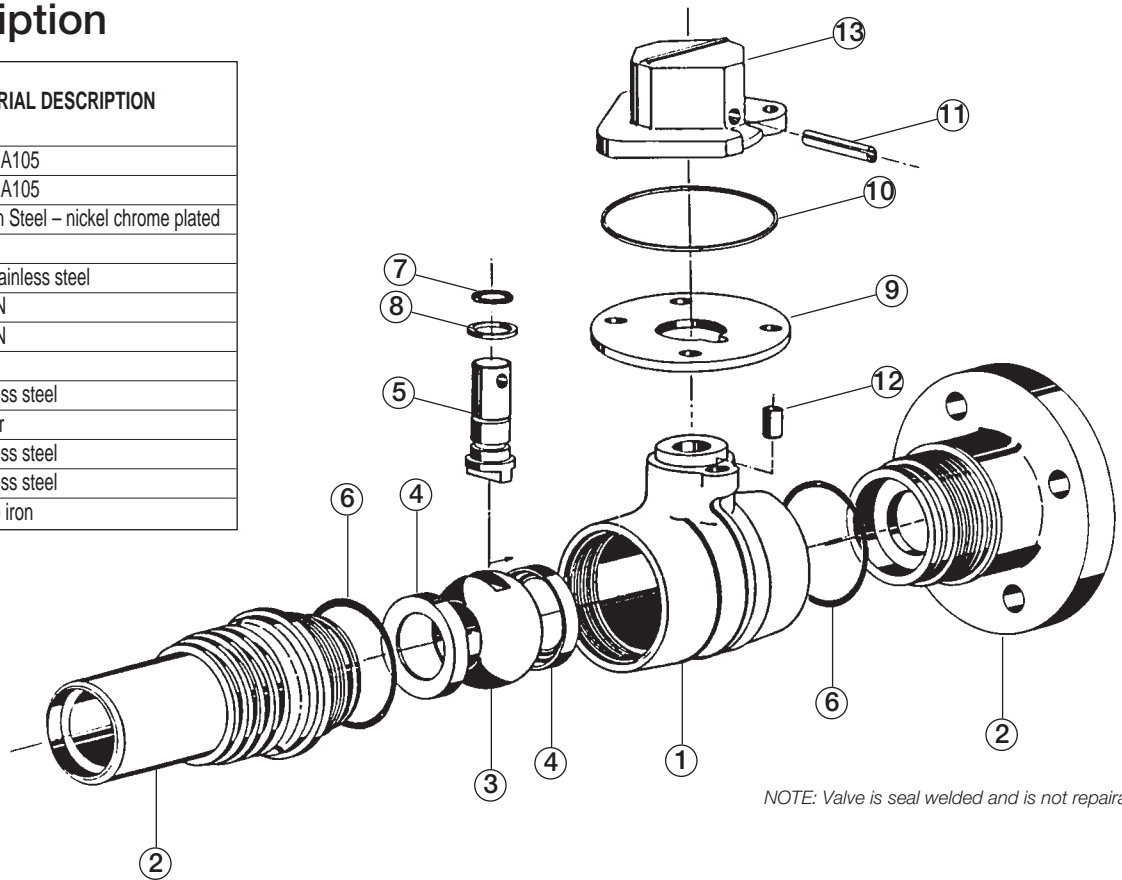
- Heat dissipating fins on the weld end side of the valve for convenient and safe field welding.
- Balon's thirty-six year performance record with its special grooved and tapered MULTI-SEAL seat design.
- Rugged stainless steel 3/8" diameter stops.

- Balls which, because they are solid instead of hollow, provide a straight-through flow path, thus assuring reduced turbulence and pressure drop across the valve.



## Material Description

ITEM	PART NAME	MATERIAL DESCRIPTION
1	Body	ASTM A105
2	Adapter	ASTM A105
3	Ball	Carbon Steel – nickel chrome plated
4	Seats	Nylon
5	Stem	316 Stainless steel
6	Body O-ring	Buna-N
7	Stem O-ring	Buna-N
8	Stem seal	TFE
9	Lock plate	Stainless steel
10	Weather seal	Rubber
11	Roll pin	Stainless steel
12	Stop pin	Stainless steel
13	Drive nut, 2" square	Ductile iron



NOTE: Valve is seal welded and is not repairable.

BALON SERIES "US" WELD X FLANGE END BALON BALL VALVE - DIM. DATA CLASS 150 - WP 285 PSI

SIZE	A PORT	B	C	D	E	F	G	Cv	CAT. NO.
2 x 1½ x 2	1½	9.4	5.9	5	6	2	4½	148	2R-US13-WF
2 x 2 x 2	2	10.0	5.9	5½	6	2	4½	*	2F-US13-WF
3 x 2½ x 3	2½	9.9	5.9	6⅞	7½	2	4½	550	3R-US13-WF
3 x 3 x 3	3	11.3	5.9	6¾	7½	2	4½	*	3F-US13-WF
4 X 3 X 4	3	10.9	6.4	6¾	9	2	4½	662	4R-US13-WF
4 X 4 X 4	4	12.1	6.4	7½	9	2	4½	*	4F-US13-WF

BALON SERIES "US" WELD X FLANGE END BALON BALL VALVE - DIM. DATA CLASS 300 - WP 740 PSI

SIZE	A PORT	B	C	D	E	F	G	Cv	CAT. NO.
2 x 1½ x 2	1½	10.15	5.9	5	6½	2	4½	148	2R-US33-WF
2 x 2 x 2	2	10.2	5.9	5½	6½	2	4½	*	2F-US33-WF
3 x 2½ x 3	2½	11.46	5.9	6⅞	8¼	2	4½	550	3R-US33-WF
3 x 3 x 3	3	11.5	5.9	6¾	8¼	2	4½	*	3F-US33-WF
4 X 3 X 4	3	12.4	6.4	6¾	10	2	4½	662	4R-US33-WF
4 X 4 X 4	4	12.4	6.4	7½	10	2	4½	*	4F-US33-WF

\* Equal to equivalent length of pipe.

