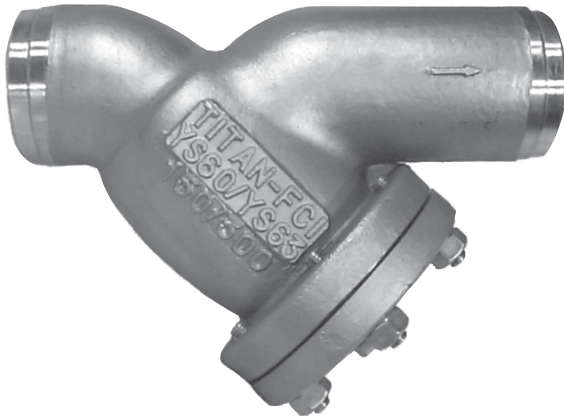


TITAN**WYE STRAINER • BUTT WELD ENDS****Class 300 lb • CARBON STEEL & STAINLESS STEEL**

3" YS 63-SS

Models: **YS 63-CS**

(Carbon Steel)

YS 63-SS

(Stainless Steel)

ANSI Class 300 lb**Size Range: 1/2" ~ 12"****WORKING PRESSURES & TEMPERATURE - NON-SHOCK**

ANSI 300 lb Class	YS 63-CS	YS 63-SS
WOG (Water, Oil, Gas)	740 PSI @ 100 °F	720 PSI @ 100 °F
Saturated Steam	300 PSI @ 420 °F	300 PSI @ 420 °F
MAX Liquid	400 PSI @ 800 °F	350 PSI @ 1000 °F

Features:

- SELF CLEANING TYPE
 - PRECISION MACHINED SCREEN SEAT
 - TAPPED NPT BLOW-OFF
 - DRAIN/BLOW-OFF CONNECTION FURNISHED WITH PLUG STANDARD
 - HIGH TEMPERATURE COVER GASKETS ARE ENCAPSULATED IN MACHINED COUNTER BORES
 - EPOXY PAINTING IS STANDARD ON ALL CARBON STEEL UNITS
 - STRAINER HAS LARGE OPEN AREA - MINIMUM 2.5 TIMES LARGER THAN CORRESPONDING PIPE
 - INLET AND OUTLET BOSSES ARE PROVIDED FOR GAUGE TAPPING
- PLEASE SPECIFY GAUGE TAPPING WHEN REQUIRED
- STAINLESS STEEL STRAINERS EQUIPPED WITH STAINLESS STEEL STUDS AND NUTS
 - BOLTED COVER FLANGE ALLOWS EASY REMOVAL OF SCREEN FOR CLEANING
- ALSO HELPS TO ENSURE PROPER ALIGNMENT OF SCREEN DURING REASSEMBLY
- BUTT WELD DETAIL IS SCHEDULE 40 PER ANSI B16.25 - OTHER SCHEDULES AVAILABLE

*Ideal Design for Petrochemical and Industrial Applications
with Higher Pressure and Temperature Requirements*



TITAN FLOW CONTROL
LUMBERTON, NC USA

WYE STRAINER

MODEL: YS 63-CS

MODEL: YS 63-SS

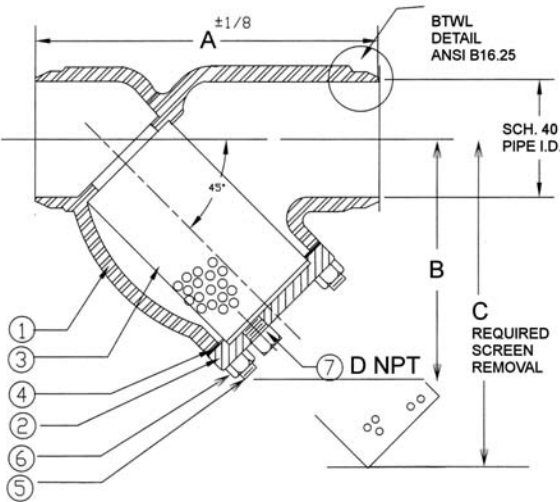
Butt Weld Ends

Butt Weld Ends

Carbon Steel

Stainless Steel

ANSI Class 300 lb



BILL OF MATERIALS

No.	PART	YS 63-CS	YS 63-SS
1	Body	ASTM A216 Gr. WCB	ASTM A351 Gr. CF8M
2	Cover	ASTM A216 Gr. WCB	ASTM A351 Gr. CF8M
3	Screen*	Type 304 Stainless Steel	
4	Gasket*	Type 304 Stainless Steel Spiral Wound	
5	Studs	ASTM A193 Gr. B7 AISI 4140/4142	ASTM A193 Gr. B8 AISI 304
6	Nuts	ASTM A194 Gr. 2H	ASTM A194 Gr. 8 AISI 304
7	Plug	ASTM A105	ASTM A182 Gr. F316

*Recommended spare parts

Notes:

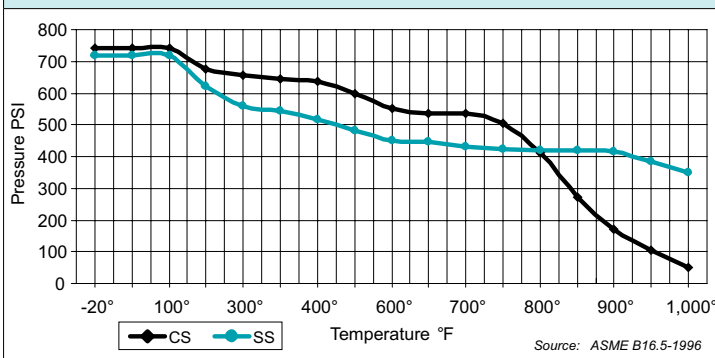
- A wide range of optional gasket materials are available. Consult factory (C/F).
- Exotic, optional materials are available. Consult factory (C/F).
- Optional wire mesh and perforated screens are available. Consult factory (C/F).
- Cover gasket is encapsulated in machined recessed seat.

DIMENSIONS:

SIZE		1/2	3/4	1	1 1/4	1 1/2	2	2 1/2	3	4	5	6	8	10	12
		in	mm	15	20	25	32	40	50	65	80	100	125	150	200
A DIMENSION FACE TO FACE	in	6.625	8.313	8.313	10.125	10.25	8.625	10.625	12.0	14.5	19.313	19.313	23.0	27.375	32.25
	mm	168	211	211	257	260	219	270	305	368	491	491	584	695	819
B DIMENSION CTR. LINE - BOTTOM	in	3.5	3.75	3.75	5.5	5.5	5.25	6.5	7.0	8.25	11.25	13.5	15.5	18.5	21.75
	mm	89	95	95	140	140	133	165	178	210	286	343	394	470	552
C DIMENSION SCREEN REMOVAL	in	5.0	5.0	5.0	8.0	8.0	7.0	9.75	10.0	12.0	17.0	20.0	22.75	28.0	30.0
	mm	127	127	127	203	203	178	248	254	305	432	508	578	711	762
D DIMENSION NPT BLOW-OFF	in	3/8	1/2	1/2	1/2	1/2	1/2	1	1	1 1/2	2	2	2	2	2
	mm	10	15	15	15	15	15	25	25	40	50	50	50	50	50
ASSEMBLED WEIGHT	lb	5.5	10.0	10.0	12.5	12.5	11.0	14.0	20.0	40.0	60.0	90.0	168.0	250.0	440.0
	kg	2.5	4.5	4.5	5.7	5.7	5.0	6.3	9.1	18.1	27.2	40.8	76.1	113.3	199.4
Flow Coefficient	C _v	9	18	30	45	62	98	130	170	260	400	560	950	1600	2100

Dimensions and weights are for reference only. When required, request certified drawing.

PRESSURE-TEMPERATURE • YS 63-CS/SS • ANSI CLASS 300 LB



- CS not recommended for prolonged service above 800 °F, carbide phase of steel may convert to graphite.
- SS not recommended for prolonged service above 1000 °F when carbon content is less than 0.04%.

TESTING: Strainers are individually, hydrostatically tested at 1.5 x the 100 °F rating, rounded off to the next higher 25 PSI measurement .

WORKING PRESSURES & TEMPERATURE - NON-SHOCK

ANSI 300 lb Class	YS 63-CS	YS 63-SS
WOG (Water, Oil, Gas)	740 PSI @ 100 °F	720 PSI @ 100 °F
Saturated Steam	300 PSI @ 420 °F	300 PSI @ 420 °F
Max Liquid	400 PSI @ 800 °F	350 PSI @ 1000 °F

STANDARD SCREEN SELECTIONS

Sizes	Water Service	Open Area	Steam	Open Area
1/2" ~ 4"	.062 (1/16)	37%	.033(1/32)	28%
5" ~ 12"	.125 (1/8)	40%	.045 (3/64)	36%

A wide range of wire mesh and perforated screens are available. C/F.

APPLICABLE STANDARDS

Butt Weld Detail	ANSI B16.25
Pressure Temperature Rating	ANSI B16.34
Shell Wall Thickness	ANSI B16.34

Ordering Code: _____ Size: _____
 Customer/Project: _____
 Inq./P.O. No.: _____
 Titan Order No.: _____
 Certified By: _____ Date: _____



TITAN FLOW CONTROL, INC.
Engineering Specification Submittal

WYE STRAINER • YS 63-CS & YS 63-SS

Size	Model Number	Description	Drawing No.
			YS 63-CS/SS