

TITAN**WYE STRAINER • BUTT WELD ENDS****Class 600 lb • CARBON STEEL & STAINLESS STEEL**

3" YS 65-CS

Models: **YS 65-CS**

(Carbon Steel)

YS 65-SS

(Stainless Steel)

ANSI Class 600 lb**Size Range: 1/2" ~ 12"****WORKING PRESSURES & TEMPERATURE - NON-SHOCK**

ANSI 600 lb Class	YS 65-CS	YS 65-SS
WOG (Water, Oil, Gas)	1480 PSI @ 100 °F	1440 PSI @ 100 °F
Saturated Steam	600 PSI @ 489 °F	600 PSI @ 489 °F
MAX Liquid	825 PSI @ 800 °F	700 PSI @ 1000 °F

Features:

- SELF CLEANING TYPE
 - PRECISION MACHINED SCREEN SEAT
 - TAPPED NPT BLOW-OFF
 - DRAIN/BLOW-OFF CONNECTION FURNISHED WITH PLUG STANDARD
 - HIGH TEMPERATURE COVER GASKETS ARE ENCAPSULATED IN MACHINED COUNTER BORES
 - EPOXY PAINTING IS STANDARD ON ALL CARBON STEEL UNITS
 - STRAINER HAS LARGE OPEN AREA - MINIMUM 2.5 TIMES LARGER THAN CORRESPONDING PIPE
 - INLET AND OUTLET BOSSES ARE PROVIDED FOR GAUGE TAPPING
- PLEASE SPECIFY GAUGE TAPPING WHEN REQUIRED
- STAINLESS STEEL STRAINERS EQUIPPED WITH STAINLESS STEEL STUDS AND NUTS
 - BOLTED COVER FLANGE ALLOWS EASY REMOVAL OF SCREEN FOR CLEANING
- ALSO HELPS TO ENSURE PROPER ALIGNMENT OF SCREEN DURING REASSEMBLY
- BUTT WELD DETAIL IS SCHEDULE 80 PER ANSI B16.25 - OTHER SCHEDULES AVAILABLE

*Ideal Design for Petrochemical and Industrial Applications
with Higher Pressure and Temperature Requirements*

290 Corporate Drive
PO Box 7408
Lumberton, NC 28358

Titan Flow Control, Inc.
www.titanfci.com

Tel: 910-735-0000
Fax: 910-738-3848
titan@titanfci.com



TITAN FLOW CONTROL
LUMBERTON, NC USA

WYE STRAINER

MODEL: YS 65-CS

MODEL: YS 65-SS

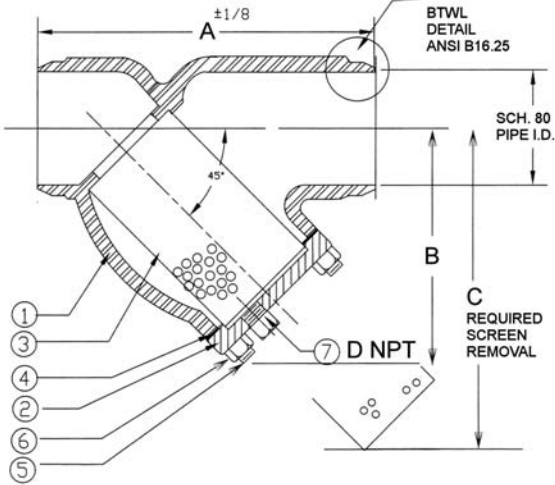
Butt Weld Ends

Butt Weld Ends

Carbon Steel

Stainless Steel

ANSI Class 600 lb



BILL OF MATERIALS

No.	PART	YS 65-CS	YS 65-SS
1	Body	ASTM A216 Gr. WCB	ASTM A351 Gr. CF8M
2	Cover	ASTM A216 Gr. WCB	ASTM A351 Gr. CF8M
3	Screen*	Type 304 Stainless Steel	
4	Gasket*	Type 304 Stainless Steel Spiral Wound	
5	Studs	ASTM A193 Gr. B7 AISI 4140/4142	ASTM A193 Gr. B8 AISI 304
6	Nuts	ASTM A194 Gr. 2H	ASTM A194 Gr. 8 AISI 304
7	Plug	ASTM A105	ASTM A182 Gr. F316

*Recommended spare parts

Notes:

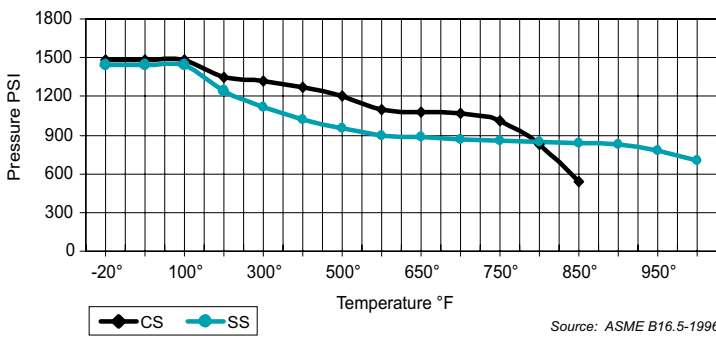
- A wide range of optional gasket materials are available. Consult factory (C/F).
- Exotic, optional materials are available. Consult factory, (C/F).
- Optional wire mesh and perforated screens are available. Consult factory (C/F).
- Cover gasket is encapsulated in machined recessed seat.

DIMENSIONS:

SIZE	in	1/2	3/4	1	1 1/4	1 1/2	2	2 1/2	3	4	5	6	8	10	12
	mm	15	20	25	32	40	50	65	80	100	125	150	200	250	300
A DIMENSION FACE TO FACE	in	6.625	8.313	8.313	10.125	10.25	11.0	12.0	13.5	17.938	22.25	25.625	31.75	37.688	45.5
	mm	168	211	211	257	260	279	305	343	456	565	651	806	957	1156
B DIMENSION CTR. LINE - BOTTOM	in	3.5	3.75	3.75	5.5	5.5	7.0	8.25	9.25	12.5	15.0	20.0	24.0	28.5	34.5
	mm	89	95	95	140	140	178	210	235	318	381	508	610	724	876
C DIMENSION SCREEN REMOVAL	in	5.0	5.0	5.0	8.0	8.0	10.0	12.5	14.5	19.5	23.0	31.0	38.5	45.5	52.0
	mm	127	127	127	203	203	254	318	368	495	584	787	978	1156	1321
D DIMENSION NPT BLOW-OFF	in	3/8	1/2	1/2	1/2	1/2	1/2	1	1	1 1/2	2	2	2	2	2
	mm	10	15	15	15	15	15	25	25	40	50	50	50	50	50
ASSEMBLED WEIGHT	lb	6.0	12.3	12.3	19.0	27.0	40.0	60.0	78.0	160.0	254.0	364.0	670.0	1090.0	1558.0
	kg	2.7	5.6	5.6	8.6	12.2	18.1	27.2	35.3	72.5	115.1	164.9	303.6	493.9	705.9
Flow Coefficient	C _v	9	1.8	3.0	4.5	6.2	9.8	13.0	17.0	26.0	40.0	56.0	95.0	160.0	210.0

Dimensions and weights are for reference only. When required, request certified drawing.

PRESSURE-TEMPERATURE • YS 65-CS/SS • ANSI CLASS 600 LB



- CS not recommended for prolonged service above 800 °F, carbide phase of steel may convert to graphite.
- SS not recommended for prolonged service above 1000 °F when carbon content is less than 0.04%.

TESTING: Strainers are individually, hydrostatically tested at 1.5 x the 100 °F rating, rounded off to the next higher 25 PSI measurement .

WORKING PRESSURES & TEMPERATURE - NON-SHOCK

ANSI 600 lb Class	YS 65-CS	YS 65-SS
WOG (Water, Oil, Gas)	1480 PSI @ 100 °F	1440 PSI @ 100 °F
Saturated Steam	600 PSI @ 489 °F	600 PSI @ 489 °F
Max Liquid	825 PSI @ 800 °F	700 PSI @ 1000 °F

STANDARD SCREEN SELECTIONS

Sizes	Water Service	Open Area	Steam	Open Area
1/2" ~ 4"	.062 (1/16)	37%	.033 (1/32)	28%
5" ~ 12"	.125 (1/8)	40%	.045 (3/64)	36%

A wide range of wire mesh and perforated screens are available. C/F.

APPLICABLE STANDARDS

Butt Weld Detail	ANSI B16.25
Pressure Temperature Rating	ANSI B16.34
Shell Wall Thickness	ANSI B16.34

Ordering Code: _____ Size: _____
 Customer/Project: _____
 Inq./P.O. No.: _____
 Titan Order No.: _____
 Certified By: _____ Date: _____



TITAN FLOW CONTROL, INC.
Engineering Specification Submittal

WYE STRAINER • YS 65-CS & YS 65-SS

Size	Model Number	Description	Drawing No.
			YS 65-CS/SS