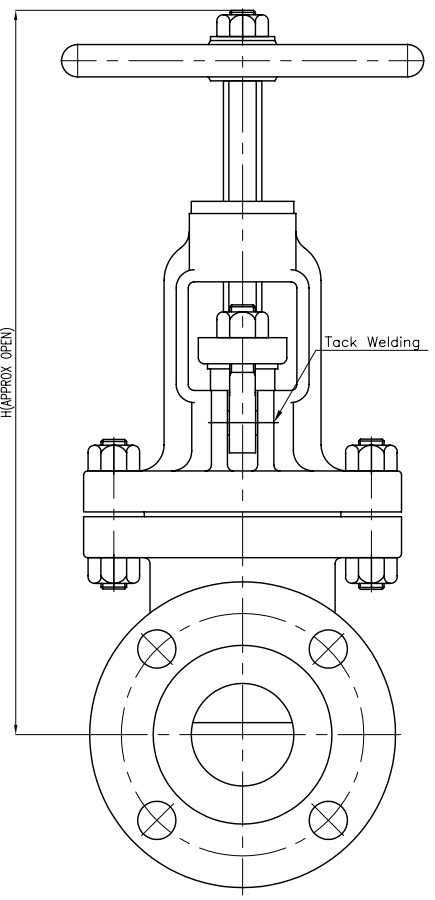
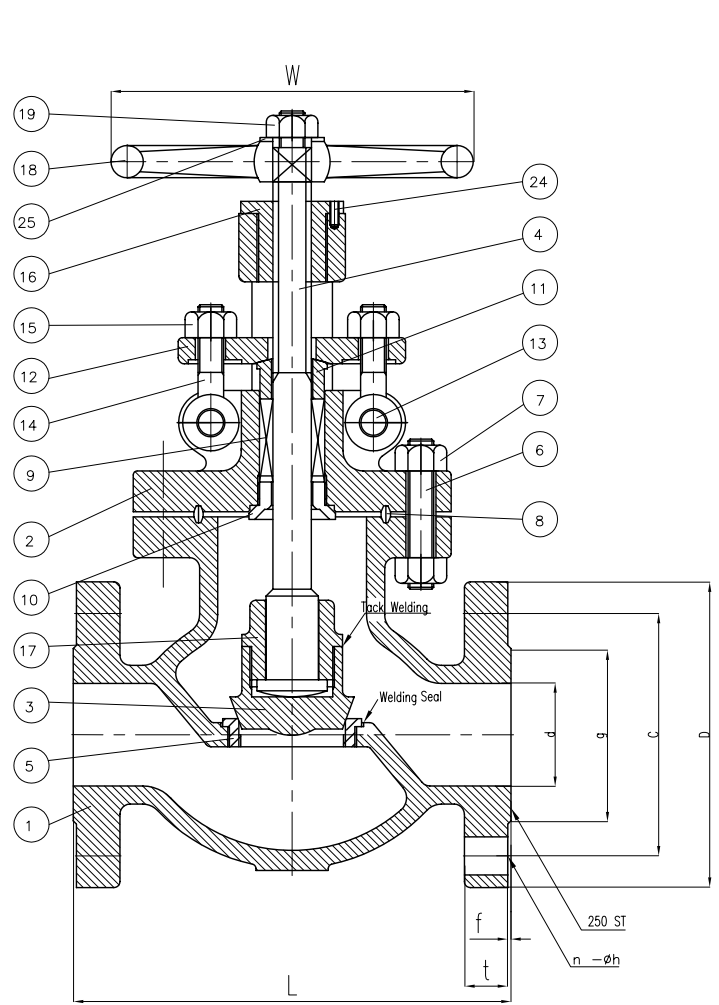


Wm. E. Williams No. 902F2 Class 900 RF OS&Y Globe Valve ASTM A 216 WCB (API Trim 8)



BILL OF MATERIALS				
NO.	PART NAME	MATERIALS	Q'TY	
1	BODY	A216Gr WCB	1	
2	BONNET	A216Gr WCB	1	
3	DISC	6" & BELOW	A217Gr CA15	1
		8" & OVER	A216Gr WCB W/13Cr FACED	
4	STEM	A479Gr 410	1	
5	SEAT RING	A105 H,F W/CO-Cr A	1	
6	BONNET BOLT	A193Gr B7	1SET	
7	BONNET NUT	A194Gr 2H	1SET	
8	GASKET	P#1500	1	
9	PACKING	P#6610+P#6528	1SET	
10	BACK SEAT	A479Gr 410	1	
11	GLAND RING	A479Gr 410	1	
12	GLAND FLANGE	A105 or WCB	1	
13	HINGE PIN	A105 or 410	2	
14	GLAND BOLT	A307Gr B	2	
15	GLAND NUT	A307Gr B	2	
16	BONNET BUSH	A439Gr D2C	1	
17	DISC NUT	A217Gr CA15	1	
18	HAND WHEEL	A197	1	
19	HANDLE NUT	A307Gr B	1	
24	SET SCREW	STEEL	1	
25	WASHER	STEEL	1	

SIZE	d	L	D	C	g	t	f	n-h	H
2.00	1.88	14.50	8.50	3.62	6.50	1.50	0.250	8-1.00	26.50
3.00	2.88	15.00	9.50	5.00	7.50	1.50	0.250	8-1.00	27.95
4.00	3.88	18.00	11.50	6.18	9.25	1.75	0.250	8-1.25	33.15
6.00	5.75	24.00	15.00	8.50	12.50	2.19	0.250	12-1.25	50.40
8.00	7.50	29.00	18.00	10.63	15.50	2.50	0.250	12-1.50	61.53

**Larger Sizes Available.

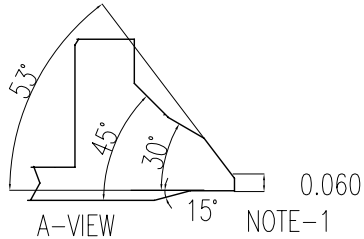
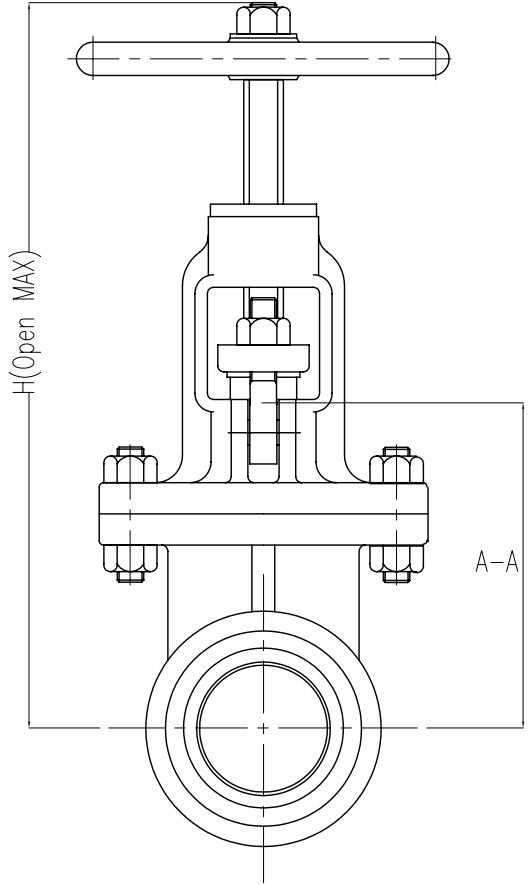
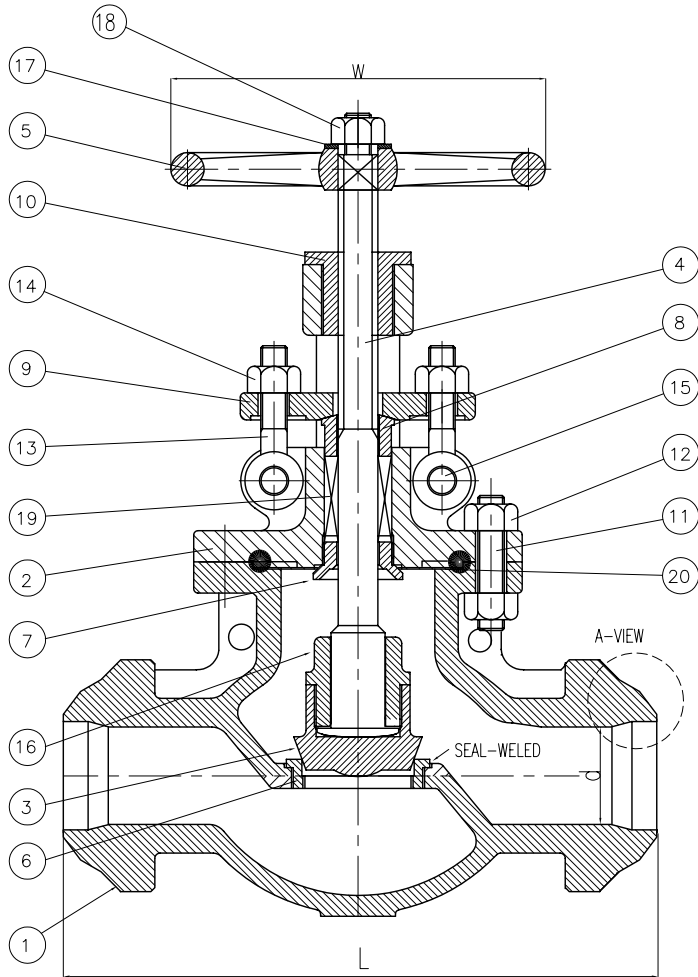
WALL THICKNESS	API 600	INSPECTION & TEST:	API 598
MARKING SYSTEM	MSS-SP-25	SHELL	HYDRO 3350PSI
DIM.OF FLANGE	ANSI B16.5	SEAT	AIR 80PSI
FACE TO FACE	ANSI B16.10	BACK SEAT	HYDRO 2450PSI
DESIGNED	ANSI B16.34		

△					
△	Rechecked Dim				
△	ISSUED FOR PROPOSAL				
NO.	DATE	DESCRIPTION	PRP'D	REV'D	APP'D



TITLE		CAST STEEL GLOBE VALVE CLASS 900 B.B R.F.		
SCALE	Fig #	DRAWING NO.	REV.	
NONE	902F2	60GL060126	DATE	10-04-01 01

Wm. E. Williams No. 902W2 Class 900 BW Globe Valve ASTM A 216 WCB (API Trim 8)



UNIT: INCH

SIZE	d	L	H
2.00	1.88	14.50	26.50
3.00	2.88	15.00	27.95
4.00	3.88	18.00	33.15
6.00	5.75	24.00	50.40
8.00	7.50	29.00	61.53

** Large Size Available.

20	GASKET	Metal	Ring joint-steel
19	PACKING	Graphited	P#6610+P#6528
18	HANDLE NUT	Stainless Steel	A194Gr 8
17	WASHER	Steel	
16	DISC NUT	Stainless Steel	A217Gr CA15
15	GLAND BOLT PIN	Carbon Steel	A105
14	GLAND NUT	Carbon Steel	A307Gr B
13	GLAND BOLT	Carbon Steel	A307Gr B
12	BONNET NUT	Carbon Steel	A194Gr 2H
11	BONNET BOLT	Carbon Steel	A193Gr B7
10	YOKE BUSH	Ductile Iron	A439Gr D2C
9	GLAND FLANGE	Carbon Steel	A105 or WCB
8	GLAND RING	Stainless Steel	A479Gr 410
7	BACK SEAT	Stainless Steel	A479Gr 410
6	SEAT RING	A105	STELLITE FACED
5	HAND WHEEL	Ductile Iron	A197
4	STEM	Stainless Steel	A479Gr 410
3	DISC	A217Gr CA15	410 (Cr13)
2	BONNET	Carbon Steel	A216Gr WCB
1	BODY	Carbon Steel	A216Gr WCB
NO.	PARTS	Material	Specification

NOTE:

1. SPECIFY THE PIPE SCHEDULE No. REQUIRED.
2. OTHER TRIMS AVAILABLE.

△					
△		Rechecked Dim			
△		ISSUED FOR PROPOSAL			
NO.	DATE	DESCRIPTION	PRP'D	REV'D	APP'D



WALL THICKNESS	MSS-SP-25	INSPECTION & TEST: API 598			
MARKING SYSTEM	ANSI B16.5	SHELL	HYDRO	3350PSI	
DIM.OF FLANGE	ANSI B16.10	SEAT	AIR	80PSI	
FACE TO FACE	API 600	BACK SEAT	HYDRO	2450PSI	
DESIGNED	ANSI B16.34				

TITLE		CAST STEEL GLOBE VALVE CLASS 900 B,B BUTTWELD END			
SCALE	Fig #	DRAWING NO.	REV.		
NONE	902W2	60GLO60127	DATE		01