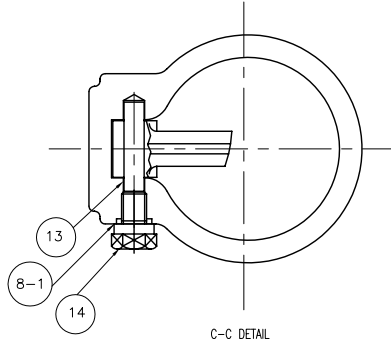
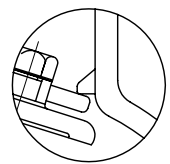
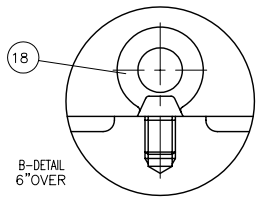
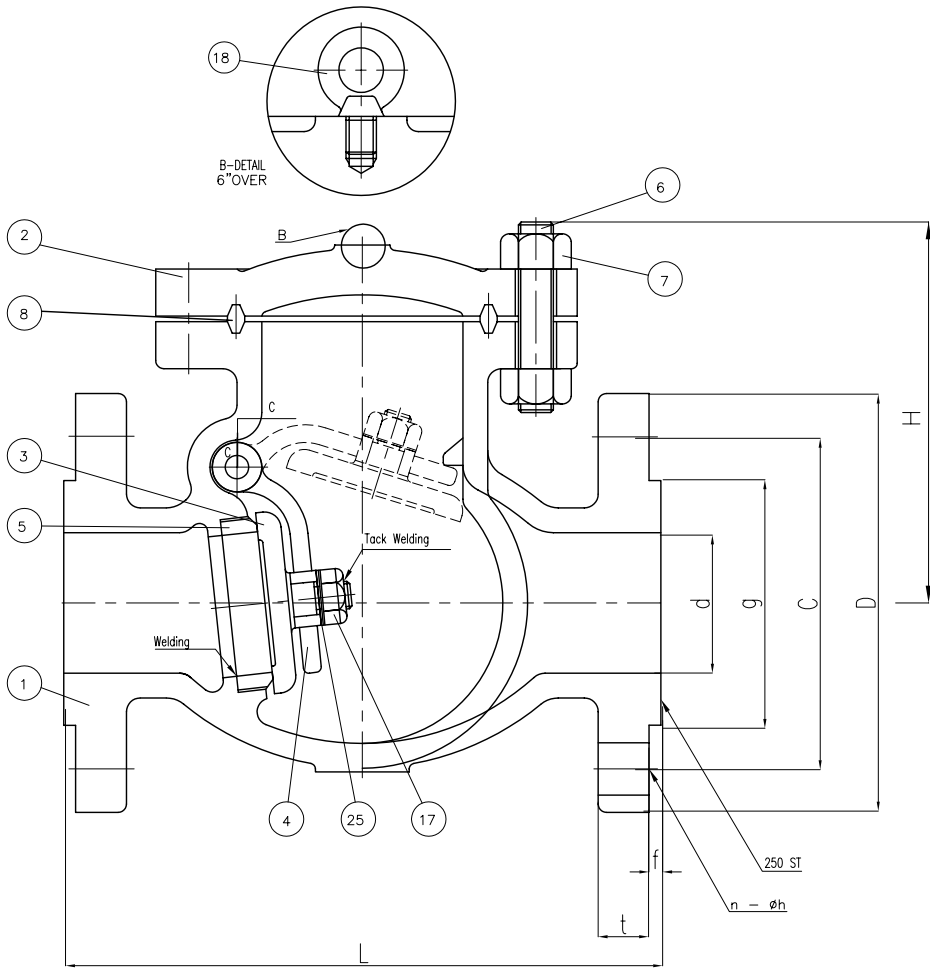


Wm. E. Williams No. 1501F2 Class 1500 RF Swing Check Valve ASTM A 216 WCB (API Trim 8)



BILL OF MATERIALS				
NO.	PART NAME	MATERIALS	Q'TY	
1	BODY	A216Gr WCB	1	
2	COVER	A216Gr WCB	1	
3	DISC	6" & BELOW	A217Gr CA15	1
		8" & OVER	A216Gr WCB With 13Cr Welding	
4	ARM	A216Gr WCB	1	
5	SEAT RING	A105 H/F WITH CO-Cr A	1	
6	COVER BOLT	A193Gr B7	1SET	
7	COVER NUT	A194Gr 2H	1SET	
8	GASKET	P#1500	1	
8-1	PIN GASKET	P#1300	1	
13	HINGE PIN	A479Gr 410	1	
14	HINGE BOLT	A307Gr B	1	
17	DISC NUT	A194Gr 8	1	
18	EYE BOLT	A307Gr B	1	
25	WASHER	STEEL	1	

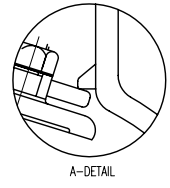
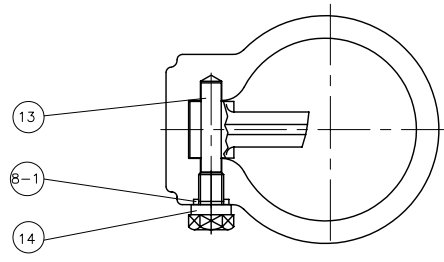
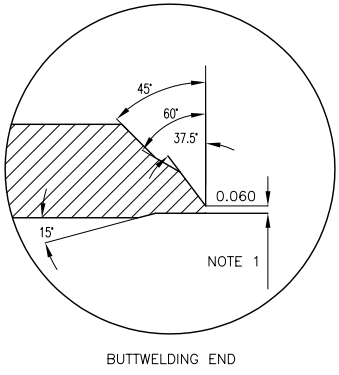
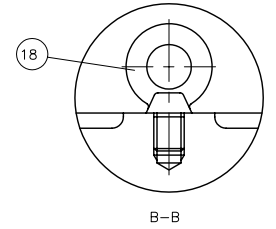
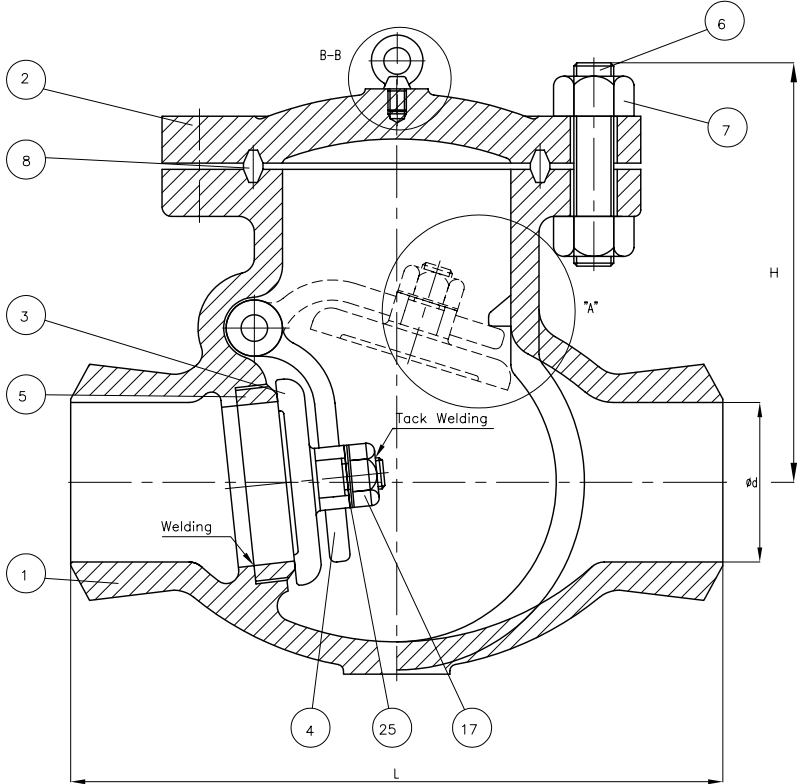
UNIT: INCH

SIZE	d	L	D	C	g	t	f	n-h	H
2.00	1.87	14.50	8.50	6.50	3.62	1.75	0.25	8-1.00	10.12
3.00	2.75	18.50	10.50	8.00	5.00	2.13	0.25	8-1.25	15.75
4.00	3.62	21.50	12.25	9.50	6.19	2.37	0.25	8-1.37	16.25
6.00	5.37	27.75	15.50	12.50	8.50	3.50	0.25	12-1.50	22.50
8.00	7.00	32.75	19.00	15.00	10.62	3.87	0.25	12-1.75	24.60

MARKING SYSTEM	MSS-SP-25	INSPECTION & TEST:	API 598	
DIM. OF FLANGE	ANSI B16.5	SHELL	HYDRO	5515PSI
FACE TO FACE	ANSI B16.10	SEAT	HYDRO	4100PSI
WALL THICKNESS	API 600	BACK SEAT	HYDRO	
DESIGNED	ANSI B16.34			

△					
△	CORRECT "L" DIM				
△	ISSUED FOR PROPOSAL				
NO.	DATE	DESCRIPTION	PRP'D	REV'D	APP'D
TITLE CAST STEEL SWING CHECK VALVE CLASS 1500 B.C R.F					
SCALE	Fig #	DRAWING NO.			REV.
NONE	1501F2	60SC060149			01

Wm. E. Williams No. 1501W2 Class 1500 BW Swing Check Valve ASTM A216 WCB



BILL OF MATERIALS			
NO.	PART NAME	MATERIALS	Q'TY
1	BODY	A216Gr WCB	1
2	COVER	A216Gr WCB	1
3	DISC	6" & BELOW: A217Gr CA15 8" & OVER: A216Gr WCB With 13Cr Welding	1
4	ARM	A216Gr WCB	1
5	SEAT RING	A105 With STELLITE Welding	1
6	COVER BOLT	A193Gr B7	1SET
7	COVER NUT	A194Gr 2H	1SET
8	GASKET	P#1500	1
8-1	PIN GASKET	P#1300	1
13	HINGE PIN	A479Gr 410	1
14	HINGE BOLT	A307Gr B	1
17	DISC NUT	A194Gr 8	1
18	EYE BOLT	A307Gr B	1
25	WASHER	STEEL	1

NOTE:
 1. SPECIFY PIPE SCHEDULE No. REQUIRED.
 2. TRIM #2, (API #8), OTHER TRIMS AVAILABLE

UNIT: INCH

SIZE	d	L	H
2.00	1.88	14.50	10.59
2.50	2.25	16.50	11.06
3.00	2.75	18.50	11.69
4.00	3.62	21.50	14.09
6.00	5.38	27.75	18.54
8.00	7.00	32.75	22.83
10.00	8.75	39.00	25.12
12.00	10.38	44.50	28.03
14.00	11.38	49.50	32.83
16.00	13.00	54.50	35.12
18.00	14.62	60.50	37.80
20.00	16.38	65.50	40.16
24.00	19.62	76.50	44.82

MARKING SYSTEM	MSS-SP-25	INSPECTION & TEST: API 598		
BUTTWELDING	ANSI B16.25	SHELL	HYDRO	5575PSI
FACE TO FACE	ANSI B16.10	SEAT	HYDRO	4080PSI
WALL THICKNESS	API 600	BACK SEAT	HYDRO	
OVERALL	API 600, ANSI B16.34			

ISSUED FOR PROPOSAL					
NO.	DATE	DESCRIPTION	PRP'D	REV'D	APP'D
		WILLIAMS			
		VALVE CORPORATION			
TITLE: CAST STEEL SWING CHECK VALVE					
CLASS 1500 B.C. BUTTWELD END					
SCALE	Fig No.	DRAWING NO.		REV. 0	
NONE	1501W2	60SC060150			