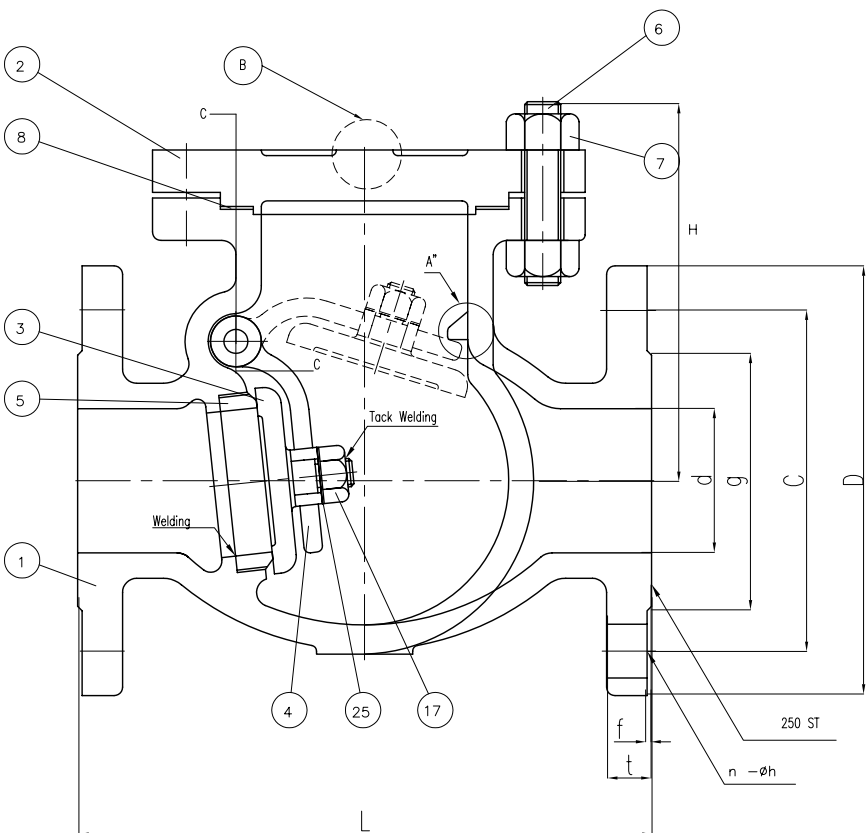


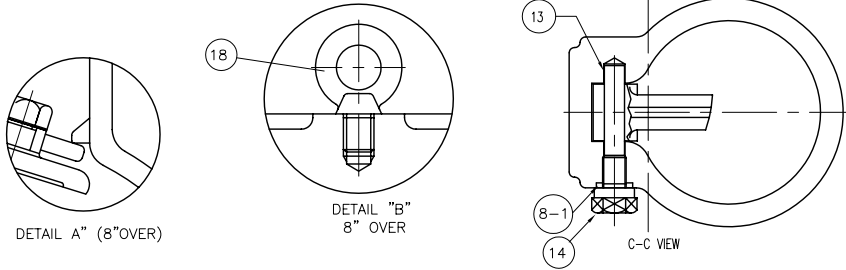
Wm. E. Williams No. 301F2 Class 300 RF Swing Check Valve ASTM A 216 WCB (API Trim 8)



BILL OF MATERIALS				
NO.	PART NAME	MATERIALS	Q'TY	
1	BODY	A216Gr WCB	1	
2	COVER	A216Gr WCB	1	
3	DISC	6" & BELOW	A217Gr CA15	
		8" & OVER	A216 GR WCB W/13Cr FACED	
4	ARM	A216Gr WCB	1	
5	SEAT RING	A105 H/F CO-CrA	1	
6	COVER BOLT	A193Gr B7	1SET	
7	COVER NUT	A194Gr 2H	1SET	
8	GASKET	P#1400G	1	
8-1	PIN GASKET	P#1300	1	
13	HINGE PIN	A479Gr 410	1	
14	HINGE BOLT	A307Gr B	1	
17	DISC NUT	A194Gr 8	1	
18	EYE BOLT	A307Gr B	1	
25	WASHER	STEEL	1	

UNIT: INCH

SIZE	d	L	D	C	g	t	f	n-h	H
2.00	2.00	10.50	6.50	5.00	3.62	0.88	0.060	8-0.75	7.40
2.50	2.50	11.50	7.50	5.88	4.12	1.00	0.060	8-0.87	8.46
3.00	3.00	12.50	8.25	6.63	5.00	1.12	0.060	8-0.87	9.25
4.00	4.00	14.00	10.00	7.88	6.19	1.25	0.060	8-0.87	9.96
5.00	5.00	15.75	11.00	9.25	7.31	1.38	0.060	8-0.87	10.55
6.00	6.00	17.50	12.50	10.63	8.50	1.44	0.060	12-0.87	10.67
8.00	8.00	21.00	15.00	13.00	10.62	1.62	0.060	12-1.00	12.56
10.00	10.00	24.50	17.50	15.25	12.75	1.88	0.060	16-1.12	16.02
12.00	12.00	28.00	20.50	17.75	15.00	2.00	0.060	16-1.25	17.72
14.00	13.25	33.00	23.00	20.25	16.25	2.12	0.060	20-1.25	20.00
16.00	15.25	34.00	25.50	22.50	18.50	2.25	0.060	20-1.37	22.28
18.00	17.00	38.50	28.00	24.75	21.00	2.38	0.060	24-1.37	23.94
20.0 0	19.00	40.00	30.50	27.00	23.00	2.50	0.060	24-1.37	25.39
24.00	23.00	53.00	36.00	32.00	27.25	2.75	0.060	24-1.62	29.02

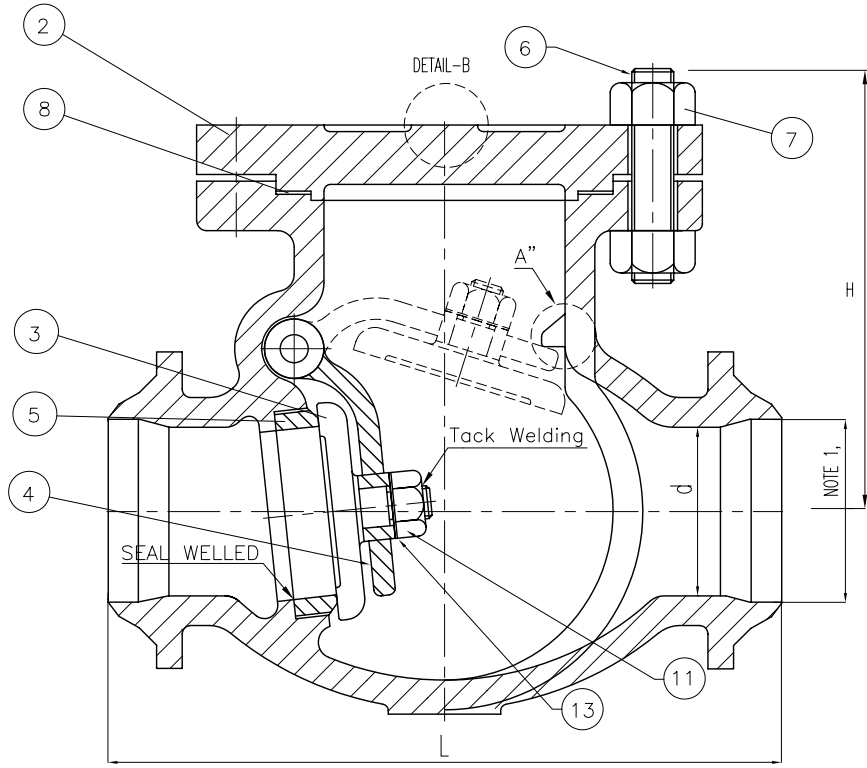


△					MARKING SYSTEM	MSS-SP-25	INSPECTION & TEST: API 598		
△		RECHECKED DIM			DIM.OF FLANGE	ANSI B16.5	SHELL	HYDRO	1125PSI
△		ISSUED FOR PROPOSAL			FACE TO FACE	ANSI B16.10	SEAT	HYDRO	825PSI
					WALL THICKNESS	API 600	BACK SEAT	HYDRO	
NO.	DATE	DESCRIPTION	PRP'D	REV'D	APP'D	DESIGNED	API 600, ANSI B16.34		

WILLIAMS
VALVE CORPORATION

TITLE				CAST STEEL SWING CHECK VALVE CLASS 300 B,C,R,F			
SCALE	Fig #	DRAWING NO.		⊕	◁	REV.	
NONE	301F2	60SC060140				01	

Wm. E. Williams No. 301W2 Class 300 BW Swing Check Valve ASTM A216 WCB

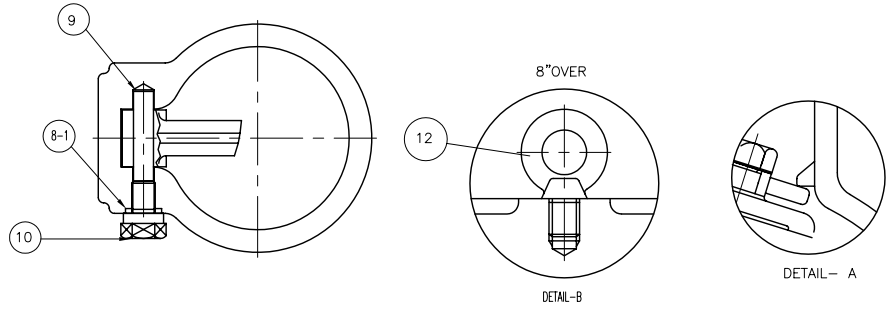


BILL OF MATERIALS				
NO.	PART NAME	MATERIALS	Q'TY	
1	BODY	A216Gr WCB	1	
2	COVER	A216Gr WCB	1	
3	DISC	6" & BELOW	A217 Gr CA15	1
		8" & OVER	A216Gr WCB With Cr13 OVERLAY	
4	ARM	A216Gr WCB	1	
5	SEAT RING	A105 H/F CO-Cr A	1	
6	COVER BOLT	A193Gr B7	1SET	
7	COVER NUT	A194Gr 2H	1SET	
8	GASKET	P#1400G	1	
8-1	PIN GASKET	P#1300	1	
9	HINGE PIN	A479Gr 410	1	
10	HINGE BOLT	A193Gr B7	1	
11	DISC NUT	A194Gr 2H	1	
12	EYE BOLT	A193Gr B7	1	
13	WASHER	STEEL	1	

NOTE:
 1. SPECIFY PIPE SCHEDULE No. REQUIRED.
 2. TRIM #2, (API #8), OTHER TRIMS AVAILABLE

UNIT: INCH

SIZE	d	L	H
2.00	2.00	10.50	7.40
2.50	2.50	11.50	8.46
3.00	3.00	12.50	9.25
4.00	4.00	14.00	9.96
5.00	5.00	15.75	10.55
6.00	6.00	17.50	10.67
8.00	8.00	21.00	12.56
10.00	10.00	24.50	16.02
12.00	12.00	28.00	17.72
14.00	13.25	33.00	20.00
16.00	15.25	34.00	22.28
18.00	17.00	38.50	23.94
20.0 0	19.00	40.00	25.39
24.00	23.00	53.00	29.02



MARKING SYSTEM	MSS-SP-25	INSPECTION & TEST:	API 598
DIM.OF FLANGE	ANSI B16.5	SHELL	HYDRO 450PSI
FACE TO FACE	ANSI B16.10	SEAT	HYDRO 315 PSI
WALL THICKNESS	API 600	BACK SEAT	HYDRO
DESIGNED	API 600, ANSI B16.34		

▲					
▲					
▲	ISSUED FOR PROPOSAL				
NO.	DATE	DESCRIPTION	PRP'D	REV'D	APP'D
TITLE CAST STEEL SWING CHECK VALVE CLASS 300 B,C .BUTTWELDED END					
SCALE	Fig #	DRAWING NO.			
NONE	301W-2	60SC060141			
					REV. 01